

## YOUR TOUR

Join PBU professor and *Total Truth* author, Nancy Pearcey, and writer-editor, Rick Pearcey, on a 9-day worldview excursion through Rome, Florence, and Paris. Learn on site how to “decipher” the meaning of the art and artifacts that have shaped the Western mind —and continue to influence our lives today. Take a “conference on wheels” to the Sistine Chapel, the Vatican art museum, the Uffizi and Louvre, and the Colosseum and Eiffel Tower — all illuminated by presentations and discussions led by Rick and Nancy Pearcey.



Three Musicians, 1921

## YOUR TOUR DIRECTORS

Dr. Nancy Pearcey is PBU’s Scholar for Worldview Studies. She has lectured widely and authored award-winning books on Christian worldview, including *Total Truth: Liberating Christianity from Its Cultural Captivity*. Take this opportunity to get a living preview of the material she is working on for her next book. Rick Pearcey has two master’s degrees and is former managing editor of *Human Events* and associate editor of the *Evans-Novak Political Report*. He now publishes *The Pearcey Report* ([www.pearceyreport.com](http://www.pearceyreport.com)).

## TOUR FACTS

**COSTS**—The basic tour price INCLUDES airfare, land transportation, six breakfasts, six dinners, double occupancy hotel rooms for six nights, first-class train with sleeping berths from Florence to Paris, entrance fees, portage when available, gratuities, and English-speaking guides. NOT INCLUDED are one breakfast and dinner on board the train, all lunches, personal expenses such as laundry and telephone, and passport or visa charges. Prices are subject to change due to fuel charges or airport taxes.

**ACCOMMODATIONS**—Hotels are superior or first class and rooms have private baths.

**MEALS**—Full breakfasts and three-course dinners are provided in hotels or local restaurants.

**LAND TRANSPORTATION**—Sightseeing is by private coach throughout.

**CHANGES IN ITINERARY**—Due to unforeseen circumstances, and at the discretion of the tour operator, adjustments may have to be made in the itinerary.

**LAND CANCELLATION POLICY**—

Prior to April 10—No penalty

Between April 10 and May 25—\$500 registration fee

After May 25—Non-refundable

**AIR CANCELLATION POLICY**—

Prior to April 10—No penalty

Between April 10 and ticket issue— \$100 penalty

After ticket issue —Non-refundable

**PASSPORTS**—All participants must have a passport valid through November 2009. US citizens who do not currently have one should allow at least four weeks for the process. Those who do not hold a U.S. passport should notify the Tour Coordinator to ascertain whether visas are needed.

**INSURANCE**—Travel Bound offers insurance for \$89 per person. Premium to be paid with registration.

**LUGGAGE**—One suitcase and one carry-on piece are allowed. Airline regulations will be communicated at a later date.

**TOUR MEMBERSHIP**—To ensure congenial membership on the tour, the tour operator reserves the right to refuse the application of any individual and/or expel any tour member whose conduct is incompatible with the interests of the party as a whole.

**RESPONSIBILITY**—Philadelphia Biblical University and Independence Travel act only as agents and do not assume liability for any injury, damage, death, loss, accident or delay to persons or property due to an act of God or negligence or default of any supplier of services.

Worldview  
Traveler

“From Plato  
to Picasso  
to You”

June 10-18, 2009

Rome, Florence, Paris:  
Learning worldviews  
through the arts



PHILADELPHIA  
BIBLICAL  
UNIVERSITY

# Your Itinerary

## ROME

### Wednesday, June 10

Your Air France flight #365 departs Philadelphia at 6:45 p.m.

### Thursday, June 11

You arrive in Rome at 11:50 a.m. The group will be met by an English-speaking guide, who will whisk you off to your first tour. Rome boasts an unrivaled 3,000-year heritage of art and architecture. You will see the Roman



Flavian amphitheatre (Colosseum) Rome

Colosseum, where gladiators fought and Christians faced the wild beasts. From there you travel up the Palatine Hill, one of the seven hills of Rome, that gives a fine view of the Circus Maximus and the Roman Forum. The Forum was where the city's business was carried out – shops, schools, temples – similar to the Greek marketplace (*agora*) where Paul often addressed the crowds on his missionary journeys. Dinner will be at the Hotel Diana. D

### Friday, June 12

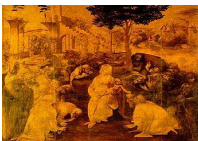
After breakfast you'll begin today's journey at the Vatican art museum. Here you will view artifacts from ancient Greek and Roman civilizations, as well as by those Renaissance greats such as Raphael. Your journey culminates with a viewing of the Sistine Chapel by Michelangelo. Next stop is St. Peter's Basilica to view Michelangelo's famous Pieta and other masterpieces. The afternoon is free for you to shop or rest. Dinner is again at the hotel. BD

## FLORENCE

### Saturday, June 13

Our final half-day tour in Rome includes the Piazza Navona, considered the most beautiful square in the city, with its three Bernini fountains including the Fountain of the Four Rivers. Then it's off to Florence by train, the city where Italian Renaissance art attained its finest form. In the afternoon you will visit the Duomo Santa Maria del Fiore, the landmark dome that graces the cover of so many books about Florence. You will enter through the bronze doors by Ghiberti, which Michelangelo called the Gates of Paradise. Inside you can gaze at the majestic medieval mosaic ceiling portraying Judgment Day. Dinner is at the Hotel Mediterraneo. BD

Adoration of the Magi, Leonardo da Vinci, Uffizi, Florence



### Sunday, June 14

We will take time together this Sunday to direct our thoughts to the Lord. Then the day's tour starts at the Uffizi, where you will take in masterpieces of the Italian Renaissance by such greats as Leonardo da Vinci, Michelangelo, and Botticelli. After this rich visual feast, you will visit the Galleria dell' Accademia to see several sculptures by Michelangelo including his famous David. In the evening we board an overnight sleeper train to Paris. B

## PARIS

### Monday, June 15

Arriving in the morning at the Gare de Bercy Station, you will start the day with a tour of the magnificent Louvre, where you will view some of the world's most famous works of art, including the Mona Lisa. The Louvre gives us a chance to trace the history of worldviews from the medieval period through the Renaissance, neo-Classicism, and Romanticism. You will also have free time to browse your favorite artists. Those with an interest in Old Testament history will delight in seeing Assyrian and Persian stonework, and the famous stele of the Code of Hammurabi. In the afternoon, you will view some of the brightest jewels of the medieval era at Notre Dame Cathedral. Dinner is at a local restaurant, then to the Pullman Bercy Hotel for the night. D

### Tuesday, June 16

Everyone loves Impressionism, a style that was birthed right here in Paris. You will spend the morning at the Musee d'Orsay, which houses the world's best collection of Impressionists and Post Impressionists – Monet, Renoir, Van Gogh, and Gauguin. You will also learn about the Christian-inspired Realism of Millet. In the afternoon, you will tour the Musée Marmottan for some of the best-known pieces by Monet. A cruise down the Seine sets us up nicely for dinner at a local restaurant. BD

Houses of Parliament, London, Musée Marmottan



### Wednesday, June 17

This is our day to go modern. Your tour takes you to the Musee National d'Art Moderne, Centre Georges Pompidou, where the building's postmodern architecture is as famous as the paintings inside. The art works take us from the Cubism of Picasso to Surrealism to postmodernism and the anti-art movement. You will see visual expressions of the worldviews that Christians must engage in order to communicate the Gospel more effectively in our age. In the afternoon, you will climb the Eiffel Tower, followed by dinner at a local restaurant. BD

### Thursday, June 18

After a hot buffet breakfast, you will be transferred from the hotel to the Charles de Gaulle airport, where you will board Air France's direct flight #366 at 1:15 p.m., arriving in Philadelphia at 3:30 p.m.

**Added to this itinerary will be informative lectures by the Pearceys when the schedule permits and space is available.**

## TOUR REGISTRATION

You may register by completing the form below and submitting it with a registration fee of \$500. A minimum of 25 participants is needed by March 11 to offer this tour. Registrations will be received after this date, if space is available.

### REGISTRATION FOR

### “FROM PLATO TO PICASSO TO YOU”

**June 10-18, 2009**

Name on Passport: \_\_\_\_\_

Address: \_\_\_\_\_

Email: \_\_\_\_\_

Phone: (\_\_\_\_) \_\_\_\_\_ Cell Phone: \_\_\_\_\_

Passport #: \_\_\_\_\_ Expiration Date: \_\_\_\_\_

Country Issuing Passport: \_\_\_\_\_

Roommate Preference: \_\_\_\_\_

### COST:

<b>Tour Price</b>	\$3899
<b>Single Supplement (\$600)</b>	_____
<b>Insurance (optional) (\$89)</b>	_____
<b>Less Deposit: (\$500)</b>	_____
<b>Balance Due:</b>	_____
<b>Final payment is due: March 11, 2009</b>	

Please make checks payable to Philadelphia Biblical University. Send registration and check to:

Miss Mae Stewart, Tour Coordinator  
Philadelphia Biblical University  
200 Manor Avenue, Langhorne, PA 19047-2990

Payment may also be made by:

( ) Mastercard ( ) Visa ( ) Discover

Name on Card \_\_\_\_\_

Number on Card \_\_\_\_\_

Three digits to the right on the back side of the card \_\_\_\_\_

Expiration Date \_\_\_\_\_

Call (215) 702-4333 if you have any questions.